

Adjusting Size Setting, Display Orientation, and Screen Resolution

1.1T904 Size Setting Utility (Font and Icons)

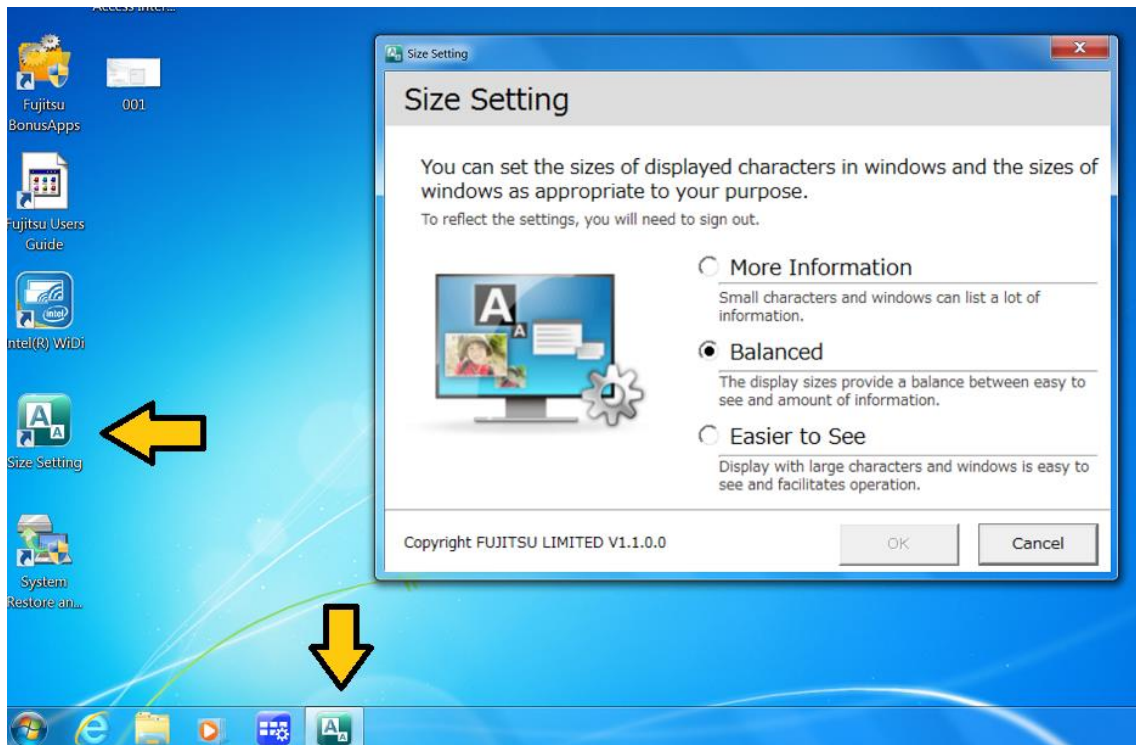
1.2T904/T935 Save Orientation

1.3T904/T935 Adjust Screen Resolution

1.1

Size Settings Utility

Because of the high screen resolution, the T904 utilizes a Size Setting application to quickly adjust settings for optimal viewability. First try the Size Setting utility to adjust viewability and then try adjusting the display resolution if further adjustment is needed.



1.2

Fujitsu Display Manager (saving orientation profiles)

You can choose to use either portrait or landscape format for the display. The settings must be captured for each orientation using the Display Manager.

Windows 7

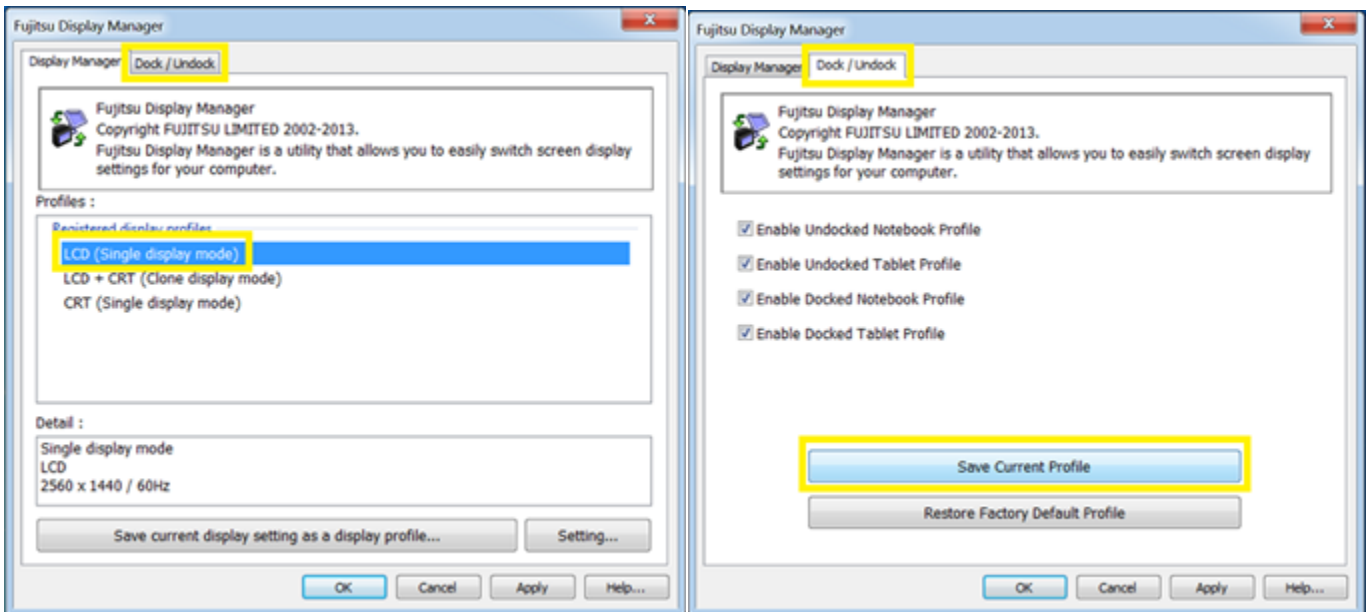
You can change these settings in the Fujitsu menu or under Start - Control Panel – Hardware and Sound – Fujitsu Tablet Controls.

In the Fujitsu Tablet Controls settings, profiles are saved for operation with different screen orientations and/or screen resolutions in the Docked/Undocked tab. These profiles have preset standard configurations that can be modified as desired.

These settings do not just affect the screen settings on the Tablet PC, but also on external monitors that are connected if updating the docked profile.

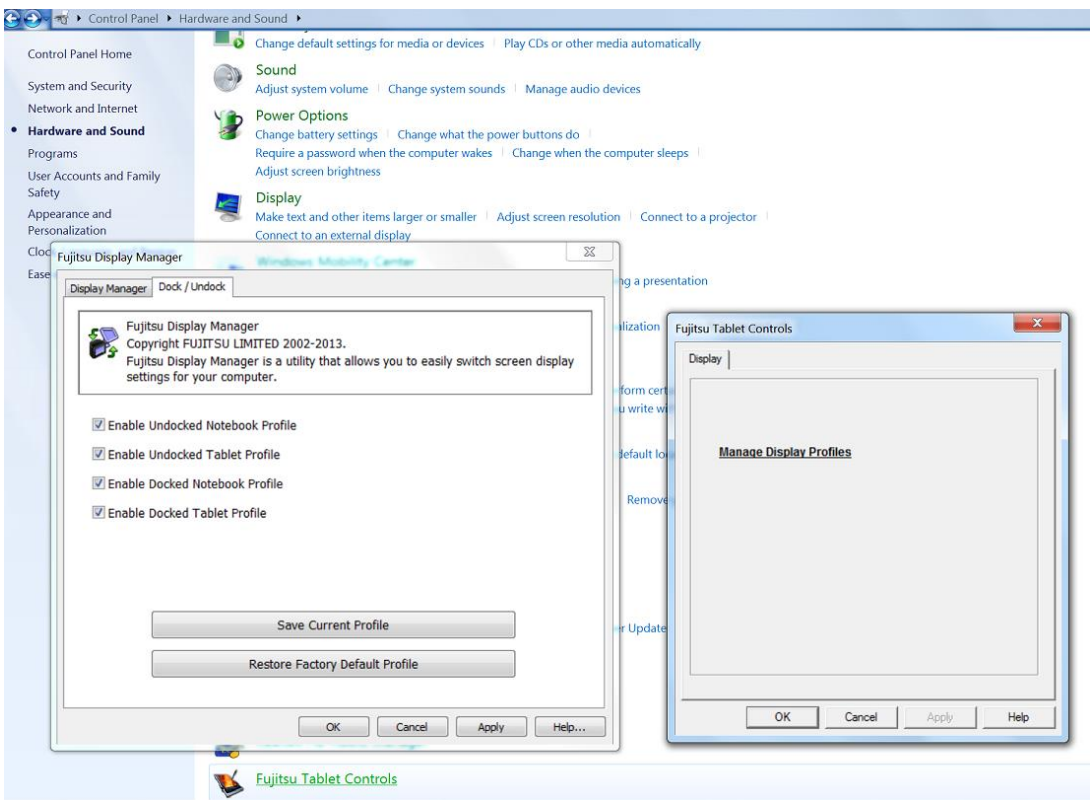
For each orientation, set the orientation and resolution as you would like it to appear and then save the Fujitsu Display Manager profile under the Docked/Undocked tab.

The second tab 'Dock/Undock' is where you want to click 'Save Current Profile' when you have the desired resolution in the landscape. Then rotate the screen into portrait mode and set the desired resolution (in this case, 768x1024). Accept the resolution and while still in portrait mode open the 'Fujitsu Display Manager' back up and go to the 'Dock/Undock' tab again and 'Save Current Profile' again. You should now be able to rotate back into landscape and it will automatically switch back to native resolution. Rotating back to Portrait should trigger 768x1024. These settings should persist even after a reboot until changed again or set back to default settings.



Docked: Notebook profile orientation and resolution – Adjust and click 'Save Current Profile'
 Docked: Tablet profile orientation and resolution – Adjust and click 'Save Current Profile'

Undocked: Notebook profile orientation and resolution – Adjust and click 'Save Current Profile'
 Undocked: Tablet profile orientation and resolution – Adjust and click 'Save Current Profile'



1.3

Screen Resolution and text/magnification settings

In most cases it is recommended that you use the native screen resolution of your device. If you do need to change resolution for application compatibility or better viewability you should try to maintain the same aspect ratio as the native resolution.

To change the Screen Resolution, right-click on the desktop and click 'Personalize' on the menu. In the bottom left corner click 'Display'.

You can change the size of text and other items on your screen by choosing one of the magnification options. It is not recommended to use a high magnification with a low resolution setting.

To change the resolution, click 'Adjust resolution' in the left hand column. You can also access this directly by right-clicking on the desktop and selecting 'Screen resolution' from the pop-up menu. The lower the resolution, the larger things will appear but may also cause distortion and require scrolling to view the entire screen or application.